



# CENTRE FOR HEALTH SCIENCE

*“Addressing the deficit of education, training and research activities in mountain areas, with a focus on health science”*

**Gillian Galloway and  
Lindsey Moodie  
Centre for Health Science Company**

16<sup>th</sup> September 2010  
Lillehammer, Norway

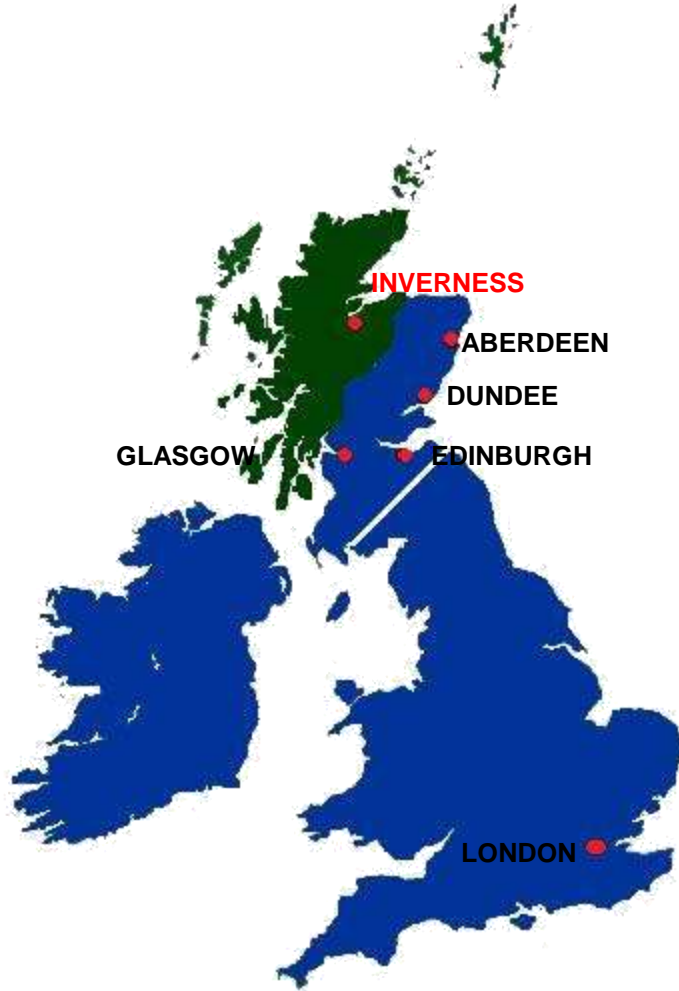
# A CENTRE FOR EXPERTISE IN

RESEARCH  
EDUCATION  
TRAINING  
PATIENT CARE  
BUSINESS DEVELOPMENT  
IN THE FIELDS OF  
HEALTHCARE AND  
BIOTECHNOLOGY



COLLABORATE  
INNOVATE  
INCUBATE  
EDUCATE

# Highlands and Islands of Scotland



The Highlands and Islands region has a population of approximately 400,000 people, 8% of the national population, dispersed over 41% of the land mass of Scotland.

COLLABORATE  
INNOVATE  
INCUBATE  
EDUCATE

# Why a Centre for Health Science?

Progress to 2002:

- Nursing and medical undergraduates
- Training within the health service
- Inverness Medical Ltd
- Centre for Rural Health
- Prospective University of the Highlands and Islands
- Highlands and Islands Enterprise role

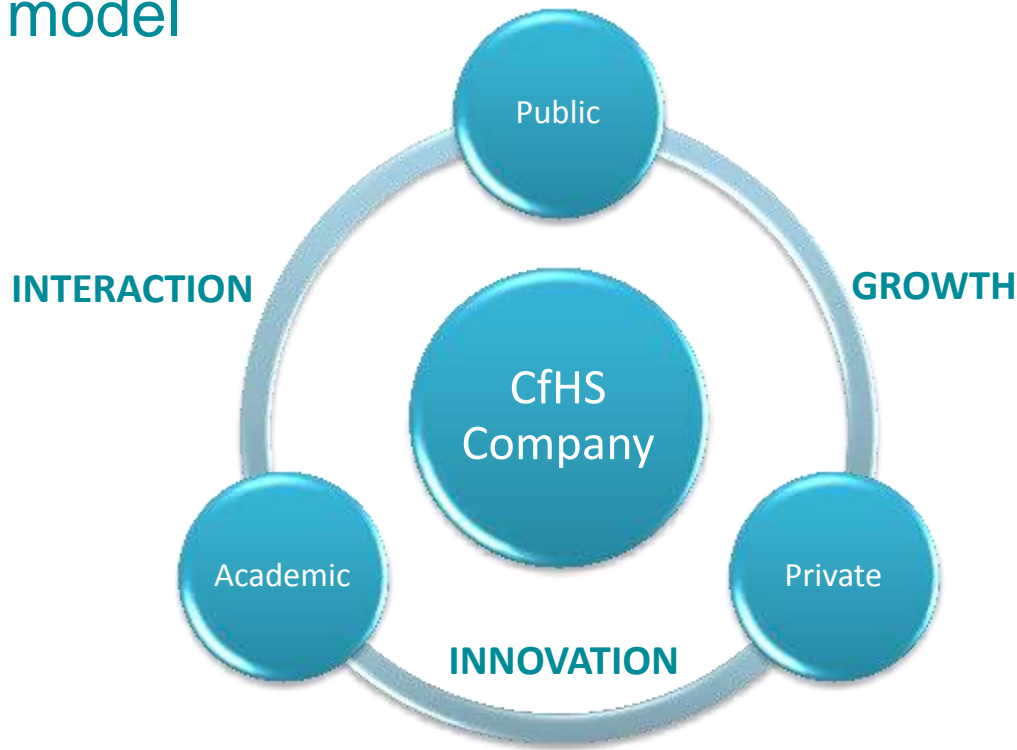
# Overview

- Idea first suggested in 2002 by HIE
- Scope: teaching, training, patient care, research and business incubation
- Ethos: to stimulate innovation and creativity and encourage collaboration
- Funded by HIE and ERDF
- Fully completed in 2008
- CfHS Company formed to:
  - Support stakeholders
  - Promote health activities
  - Provide strategic direction



# CfHS Model & Stakeholders

Triple helix model



COLLABORATE  
INNOVATE  
INCUBATE  
EDUCATE

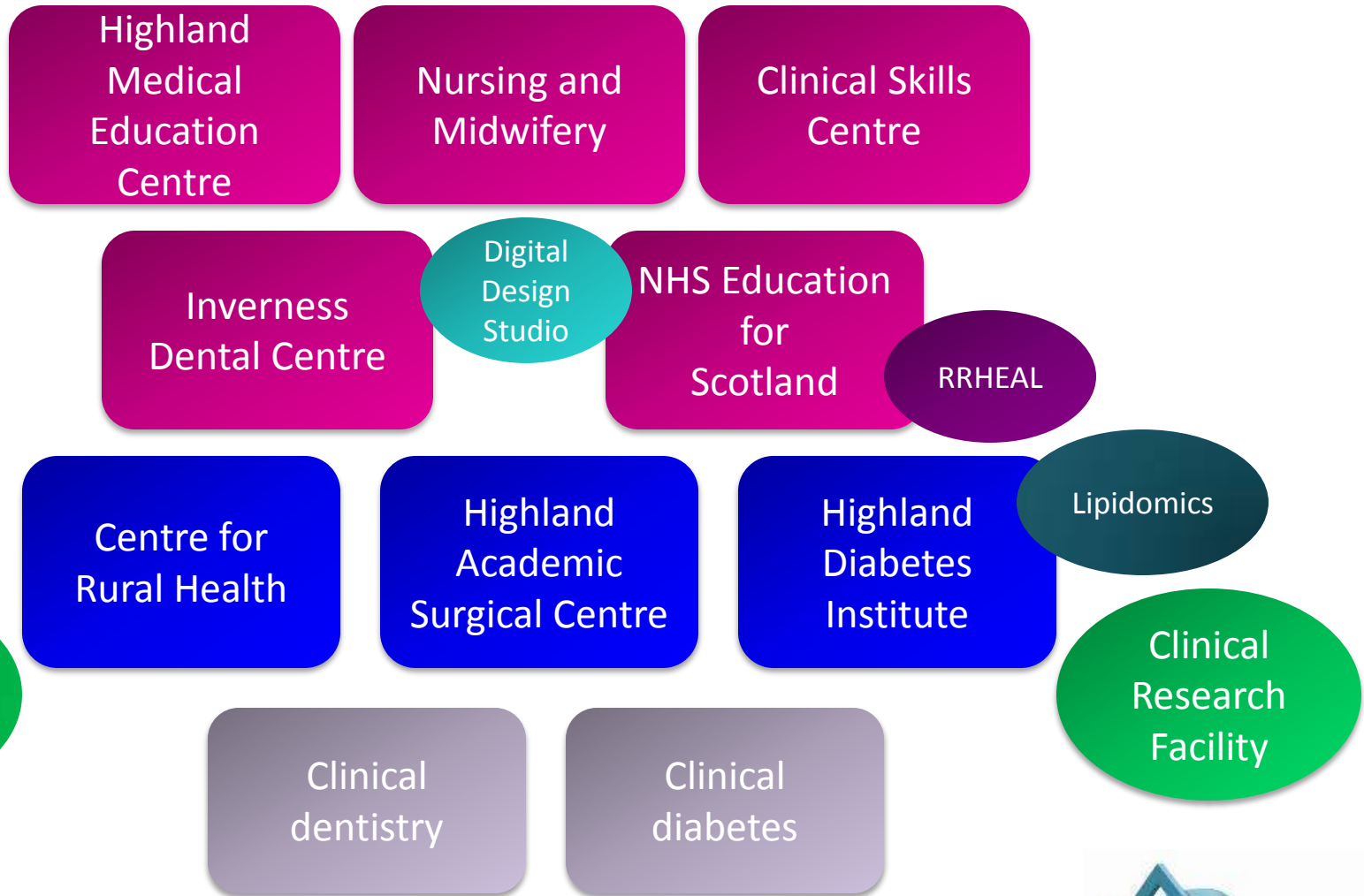


# Inspiring environment



COLLABORATE  
INNOVATE  
INCUBATE  
EDUCATE

# Departments



COLLABORATE  
INNOVATE  
INCUBATE  
EDUCATE



# Case studies



- UHI School of Oral Health Science



COLLABORATE  
INNOVATE  
INCUBATE  
EDUCATE

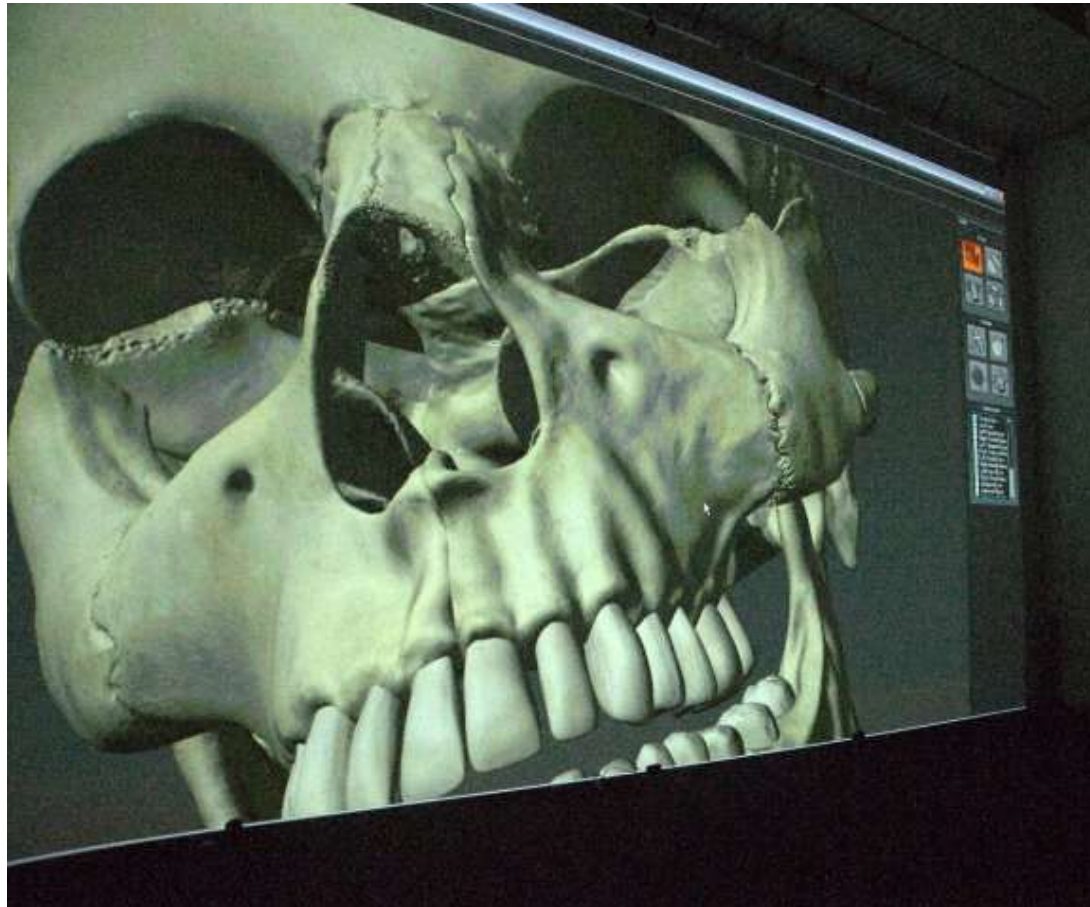


# Case studies

- Digital Design Studio

THE GLASGOW  
SCHOOL OF ART

NHS  
Education  
for  
Scotland



COLLABORATE  
INNOVATE  
INCUBATE  
EDUCATE

  
CENTRE for  
HEALTH SCIENCE  
IONAD EÒLAS SLÀINTE

# Case studies

- Clinical Skills Centre



UNIVERSITY OF STIRLING



UNIVERSITY OF ABERDEEN

NHS Highland



COLLABORATE  
INNOVATE  
INCUBATE  
EDUCATE

CENTRE for HEALTH SCIENCE  
IONAD EÓLAS SLÁINTE

# Case studies



- Highland Diabetes Institute and Clinical Research Facility



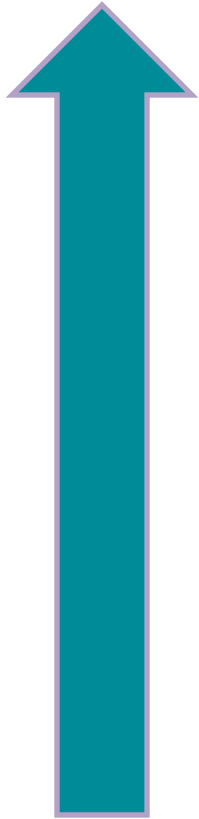
COLLABORATE  
INNOVATE  
INCUBATE  
EDUCATE



# Keys to success

- Vision
- Ambition
- Local relevance, global significance
- Partners
- Collaborations
- Industry involvement
- Funding
- Company model

# Impacts to date



- 270 employees
- Over 600 students; undergrad, postgrad, PhD
- More than 250 CPD courses/yr
- GVA - €4.96 million/yr
- Events – on average 40/yr
- PR
- Research – 40 live projects
- Attraction to LifeScan and SME's
- Business spin out
- Initial €20m investment has leveraged a further ~ €20m from partner contribution to 2008
- Further investment ~ €528k in 2010

# The Future:

## Centre for Health Science @ Inverness Campus



COLLABORATE  
INNOVATE  
INCUBATE  
EDUCATE

# Contact details

**Centre for Health Science**  
**Old Perth Road**  
**Inverness**  
**Scotland**  
**UK**  
**IV2 3JH**  
**+ 44 (0)1463 255000**

**Gillian Galloway**  
**Project Director**  
**[gillian.galloway@cfhs.eu](mailto:gillian.galloway@cfhs.eu)**

**Lindsey Moodie**  
**Business Development Manager**  
**[lindsey.moodie@cfhs.eu](mailto:lindsey.moodie@cfhs.eu)**

**[www.centreforhealthscience.com](http://www.centreforhealthscience.com)**



Find us on  
**Facebook**

follow us on  
**twitter**

**COLLABORATE**  
**INNOVATE**  
**INCUBATE**  
**EDUCATE**

