

DUORUM

from the Golden Douro Valley

Douro • Portugal

Using Biodiversity to promote Mountain Agricultural Products



Mário Agostinho

R&D Consultant
www.sinergiae.pt



SINERGIAE
Ambiente

Association for the Development of
the Douro Viticulture

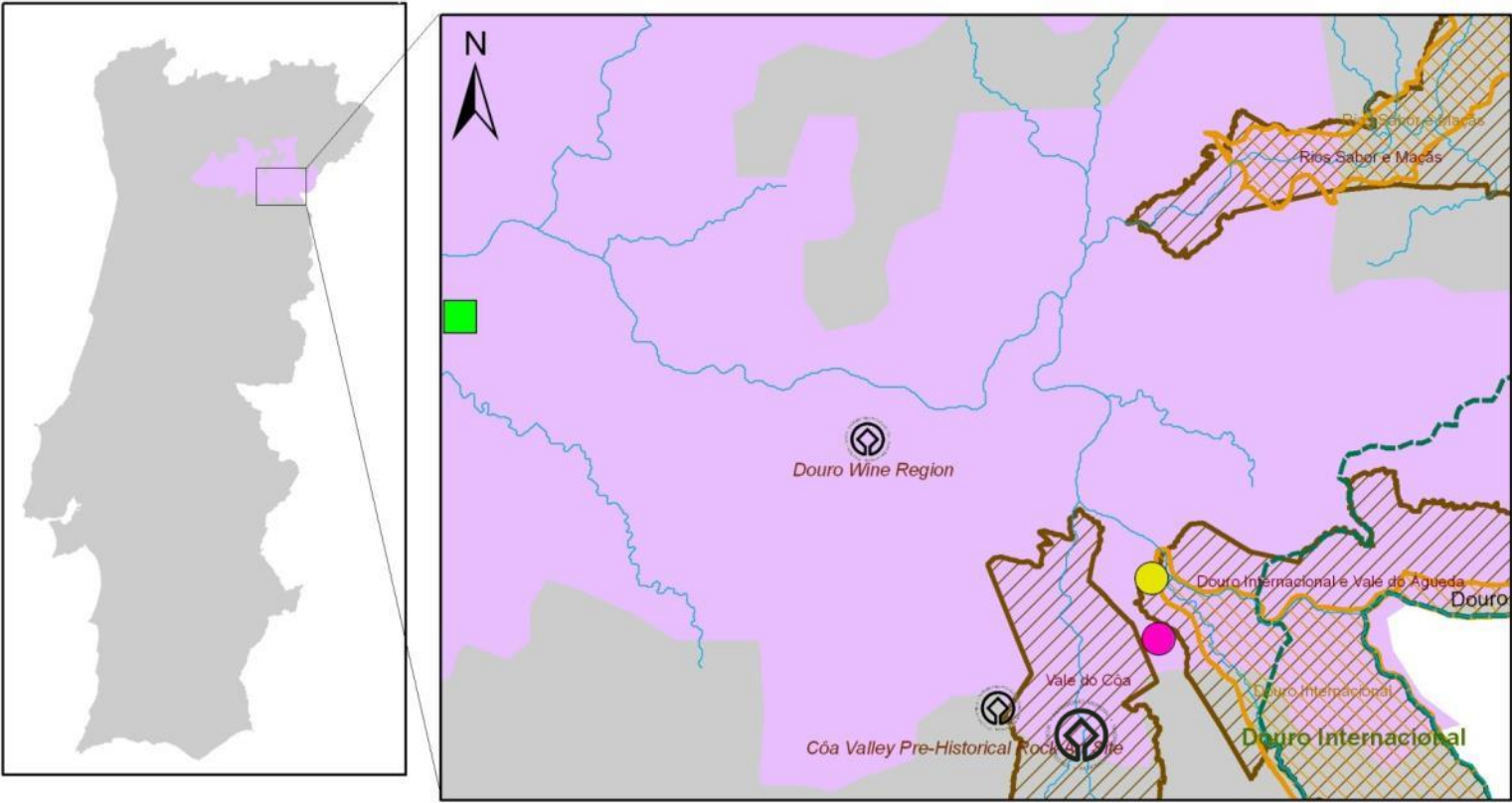


Duorum Project:

- **Produce High Quality, Gastronomical, Wines:**
 - Start from scratch (Quinta de Castelo Melhor)
 - Fragile Socio-Economy
 - Isolation (from infra-structures, specialized Workforce and licensing authorities)
 - Fragmented land ownership structure (negotiation of 70 parcels)



Vineyards Located in Cultural and Biodiversity Sensitive Areas



Legend

- Duorum Winery
- Quinta de Castelo Melhor Farm
- Quinta de São Custódio Farm
- Main rivers
- Douro Wine Region
- Douro Internacional Natural Park
- Special Area of Conservation for Habitats
- Special Protection Area for Birds





Entrada / Caminho Principal
Entrance / Main Track



Ocorrências de Avifauna Rara
Occurrences of Rare Bird Species



Sustentabilidade
Sustainability



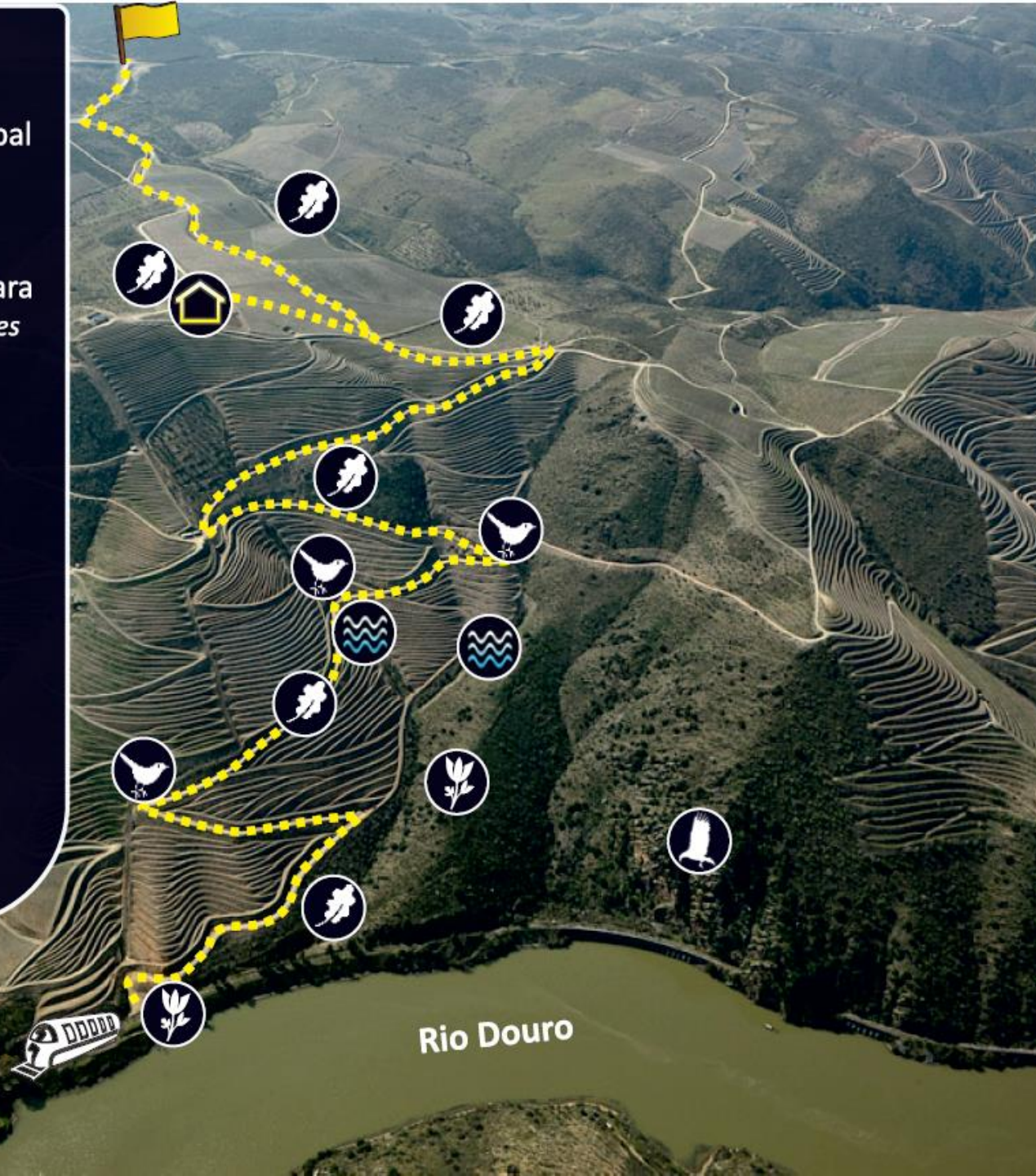
Florae
Flora



Casa de Suporte
Guest House



Linhas de Água
Water Courses



Riba de Aguiar

Rio Douro

Crag DO-08

Bonelli-Eagle
Endangered

- **Planting and activity restrictions at the crag buffer zone;**



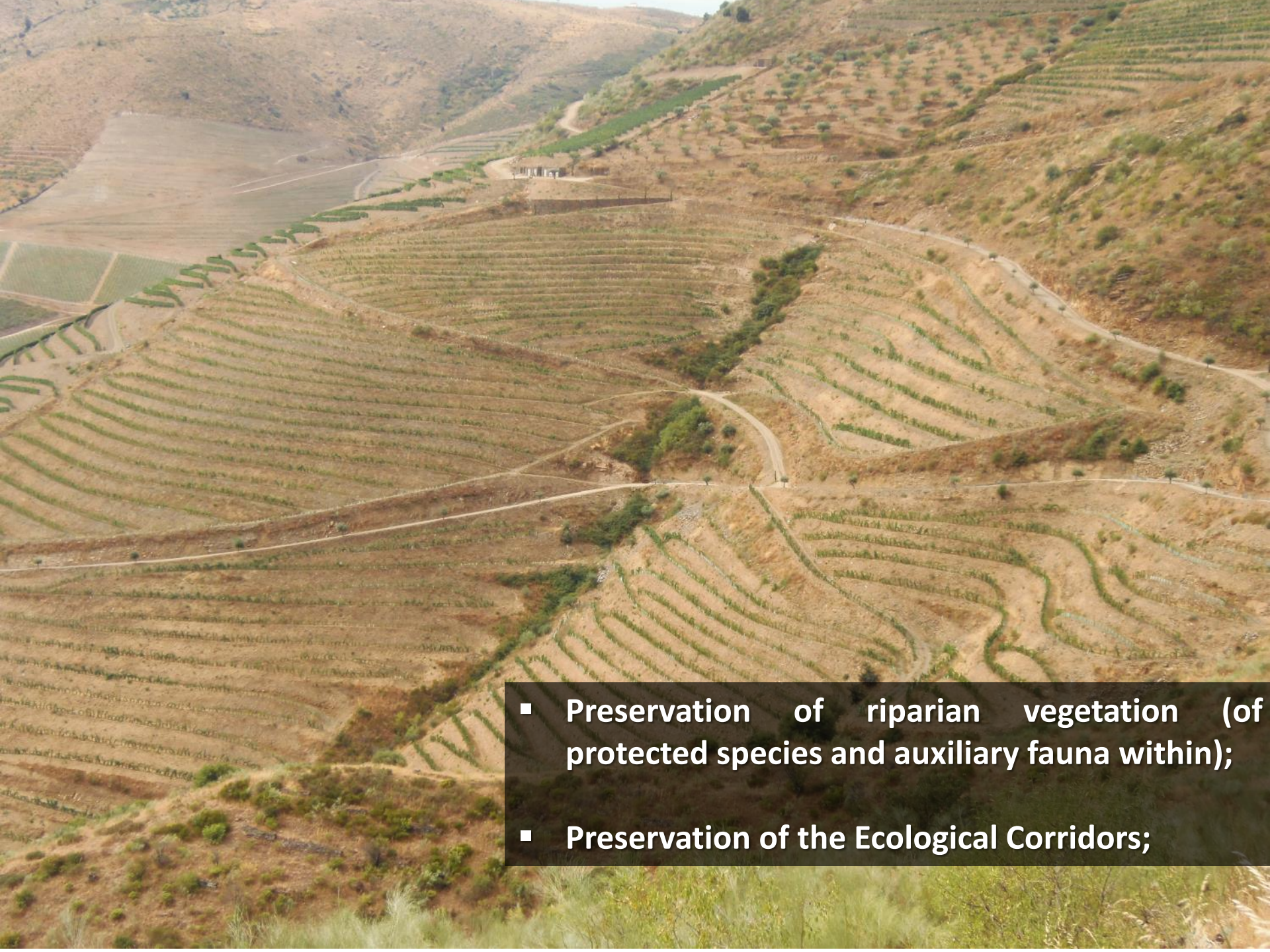


- **Integrated Farming**
- **Drainage Plan (Erosion Control)**



- **Autochthonous Vegetation in Hedgerows and Embankments;**

- 
- **Spontaneous and planted cover crops, within lines and at the borders (Functional Biodiversity);**



- Preservation of riparian vegetation (of protected species and auxiliary fauna within);
- Preservation of the Ecological Corridors;



- **Autochthonous Woodland**
- **Promotion of an Heterogeneous Mosaic**



- Preservation of ancient Olive and Almond Groves;
- Preservation of ancient Schist Walls;



- **Fauna Crops (which birds of prey feed on);**
 - **Fauna Feeders and Shelters;**

VIVEIRO

DUORUM

QUINTA DE CASTELO MELHOR

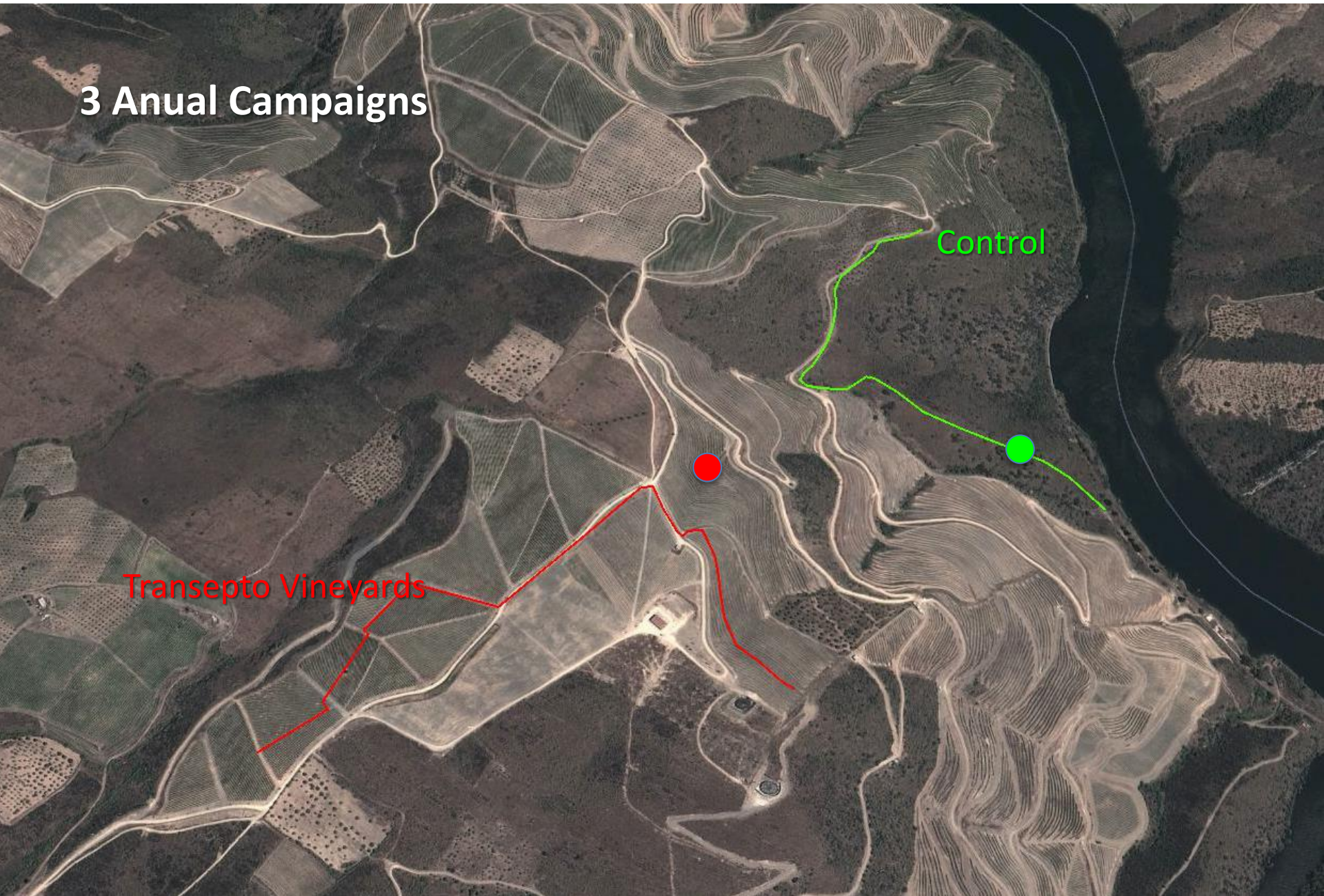
- Autochthonous Plant Nursery;
- Apiary;



- **Bird Biodiversity Monitoring;**
 - **DUORUM option**
 - **Discovery of the Black Wheatear (*Oenanthe leucura*)**
- **Implementation of a Black Wheatear Conservation Plan - “The Port Wine Bird”;**



3 Anual Campaigns

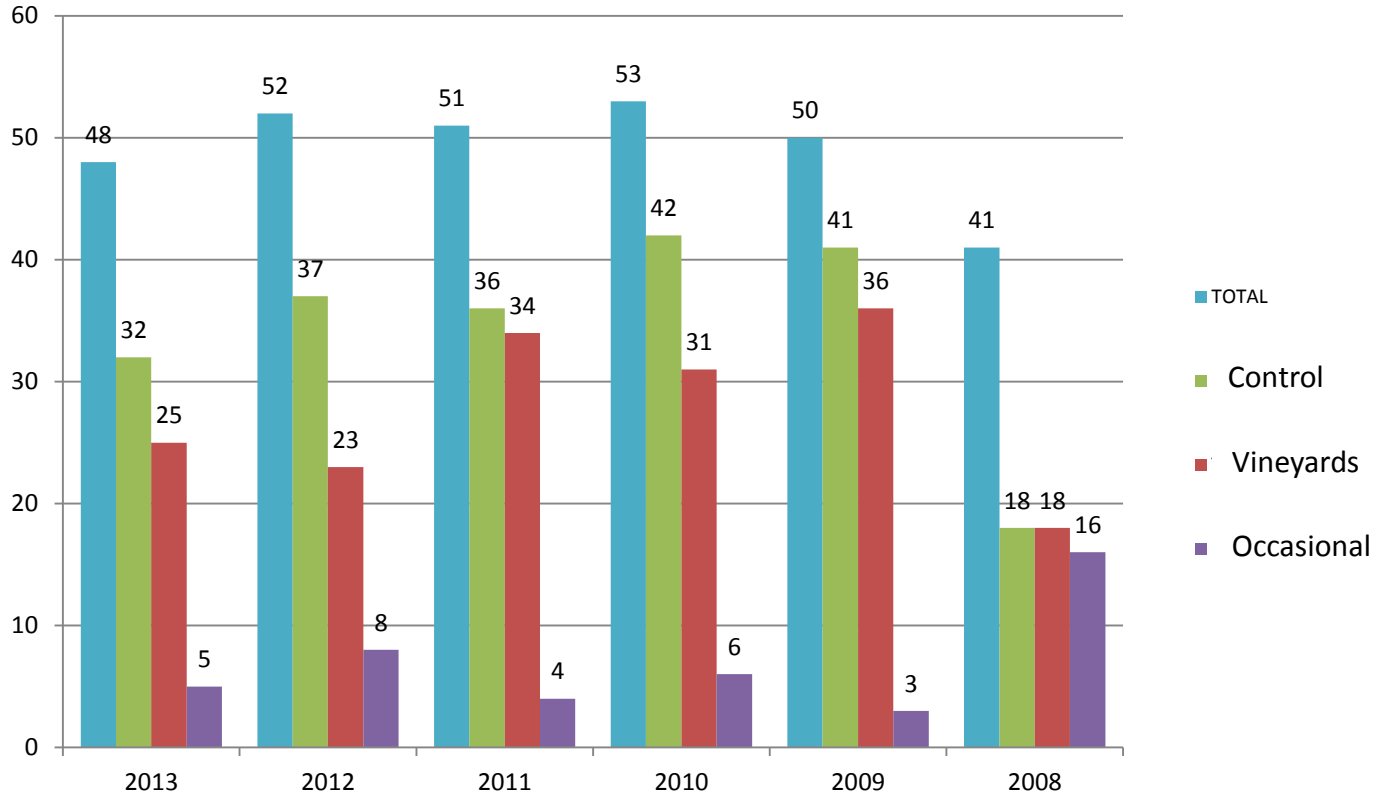


Control

Transepto Vineyards

Monitoring (2008-2014)

Nº of Species



Relevant Facts:

- The Project Increased Biodiversity levels (Habitat heterogeneity)
- Stability along time

Nº of Protected Species



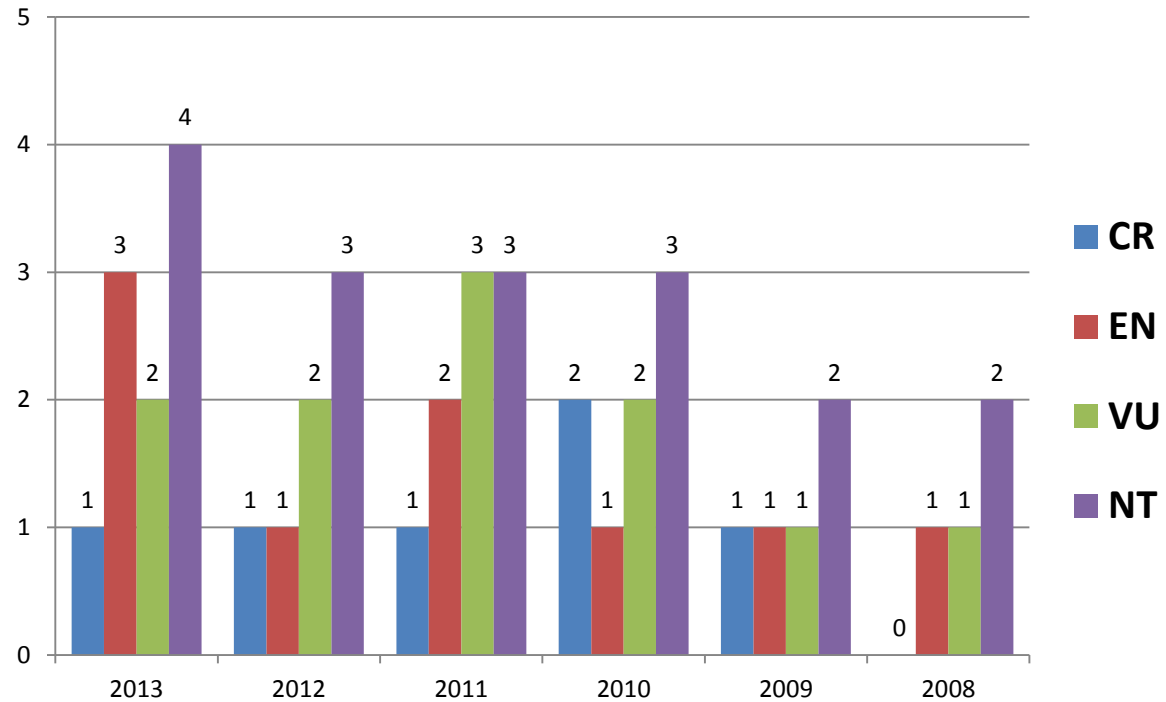
Relevant Facts:

- Sustenance/Increase of Protected Species (A-I)
- Habitat Quality





Nº of Endangered Species



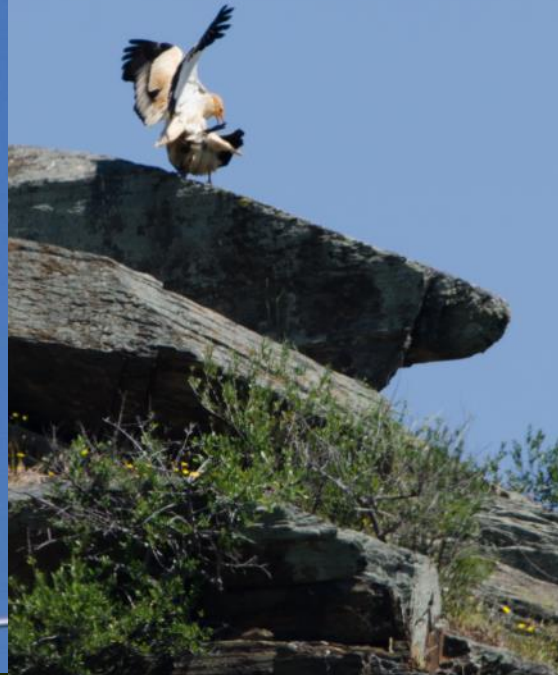
Relevant Facts:

- Increase of Endangered Species (A-I)
- Habitat Quality

Black Wheatear
Critically Endangered



Egyptian vulture
Endangered



Black-stork
Vulnerable



Golden-Eagle
Endangered

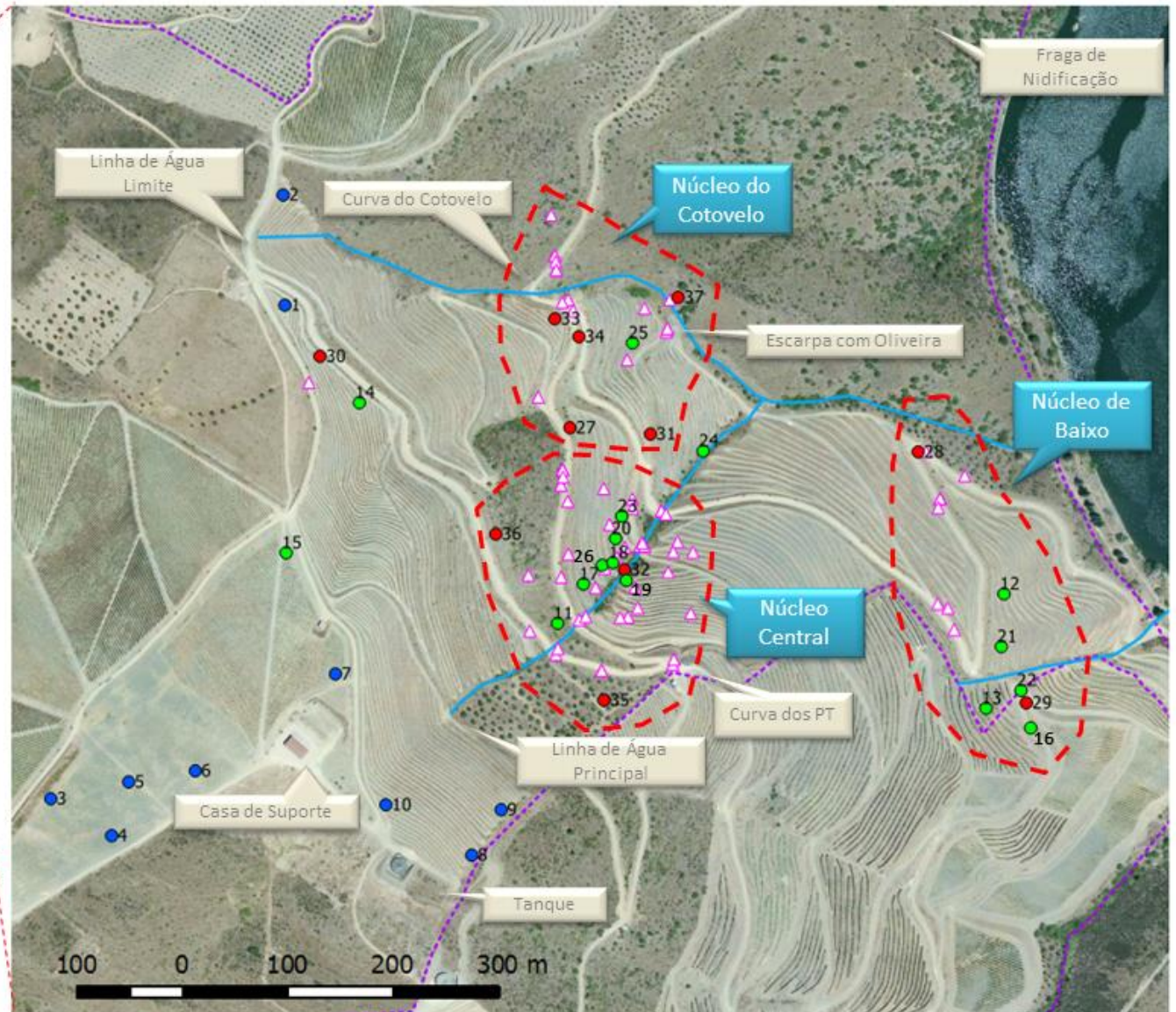
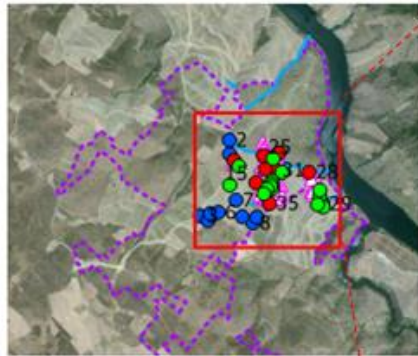
(Wikimedia)



Griffon Vulture
Near threatened

Oenanthle leucura

Black Wheatear



Legenda

- Limites de Propriedade
- Linhas de Água
- Possíveis Territórios

Registos 2013

- Janeiro
- Abril
- Agosto

Registos 2012

- △ Registos de 2012

European Initiative on Business & Biodiversity



European Initiative on

Business & 
Biodiversity



Business2Consumer

TONS DE DUORUM
DOURO DOC 2011

O reflexo do sol no Rio Douro, que origina as diferentes tonalidades nas vinhas foi o que nos inspirou na escolha do nome Tons de Duorum. Este vinho é produzido a partir das castas Touriga Franca, Touriga Nacional e Tinta Roriz expressa a natureza e do trabalho do homem.

sun on the Douro produced from the Douro Region, the result of a unique and human effort.

European Initiative on **Business & Biodiversity**

Produced and bottled by: Joana Nova de Foz Côa

DOURO DOC

Produced in Portugal

Dec. Lei nº 119/97
 >1.00L e <2.00L

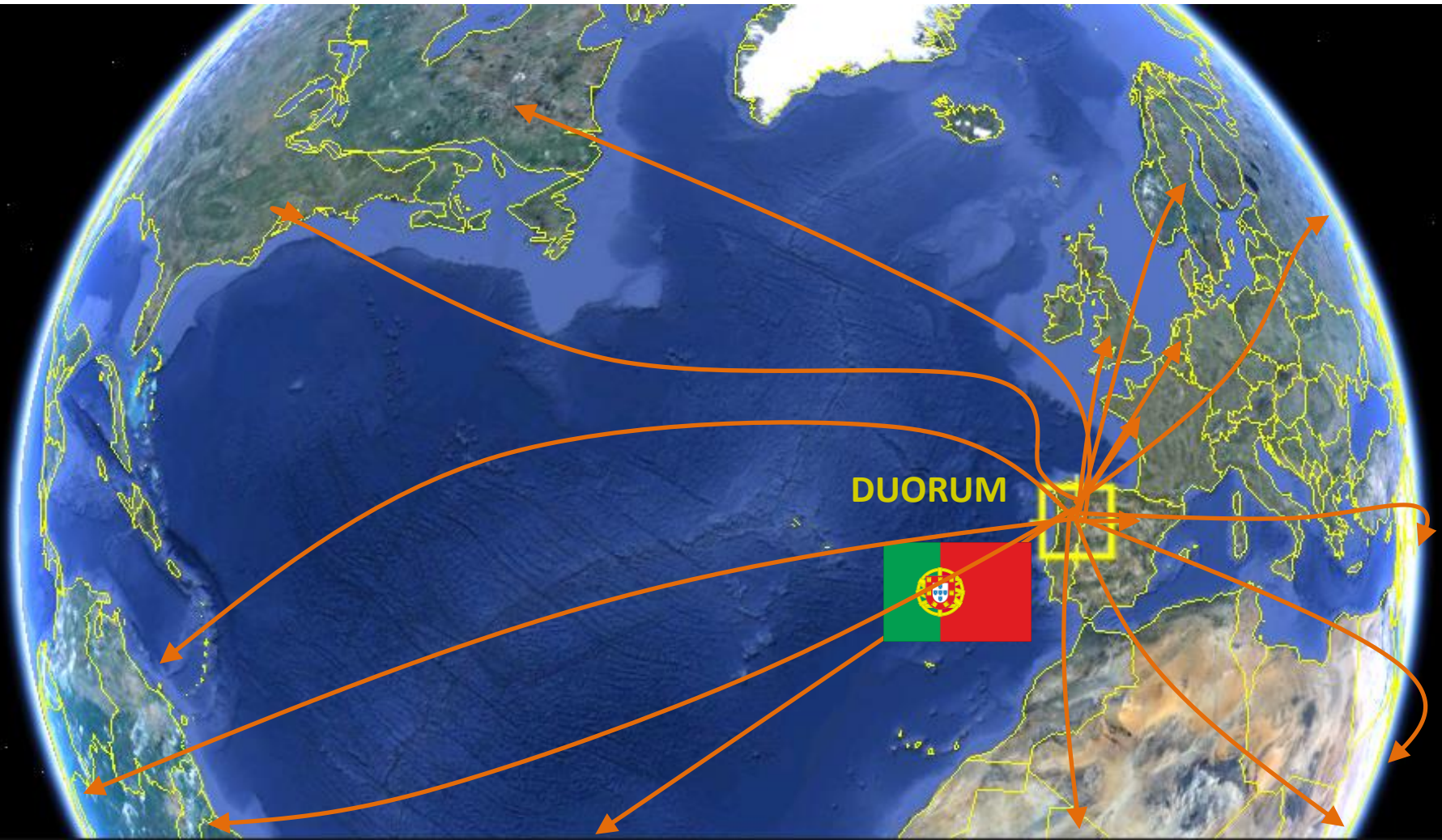
1500ml e 13,5%vol.

5 600224 301447

CONTAINS SULFITES | CONTÉM SULFITOS | CONTIENT DES SULFITES | ENTHÄLT SULFITE | INNEHÅLLER SULFITER | SISÄLTÄÄ SULFIITTEJA | INNEHOLDER SULFITTER | KONSERVERINGSSTOFFER: SULFITTER

Business2Business

24 Markets



CONTACTOS

SEDE

Quinta de Castelo Melhor,
EN 222, Km 216.8
5150-146 Vila Nova de Foz Côa
Lat 41° 02' 32.8" N
Long 7° 04' 28" W
duorum@duorum.pt

ADEGA DE ERVEDOSA

Lugar Vale Fernando
Rua Senhora do Socorro
5130-202 Ervedosa do Douro
Lat 40° 10' 13.9" N
Long 7° 28' 50.3" W

GESTVINUS, INVESTIMENTOS
VITIVINÍCOLAS E COMERCIAIS, SGPS, S.A.
Vila Santa 7100-149 Estremoz
Telf: 268 339 910 Fax: 268 339 916
Lat 38° 50' 26.26" N
Long 7° 37' 53.66" W
geral@jportugalramos.pt



www.advid.pt



www.sinergiae.pt
n.vilela@sinergiae.pt

