

FORRISK and PLURIFOR: Innovative risk management in Basque forests

FORRISK et PLURIFOR: Gestion innovant des risques dans les forêts basques

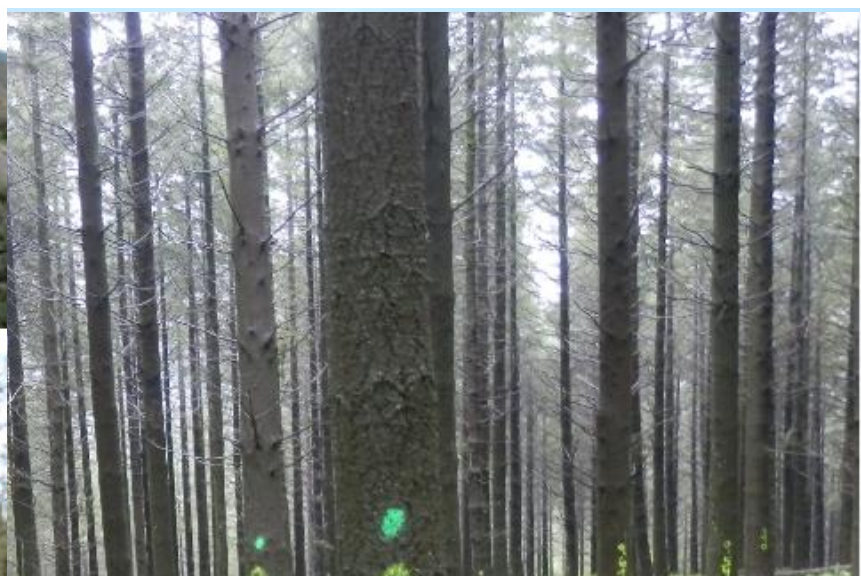
Alejandro Cantero Amiano, HAZI Foundation

Atelier 6. Innovation dans la gestion des risques naturels

4 octobre 2016

X Assises européennes de la montagne, Bragança







UE/EU - FEDER/ERDF



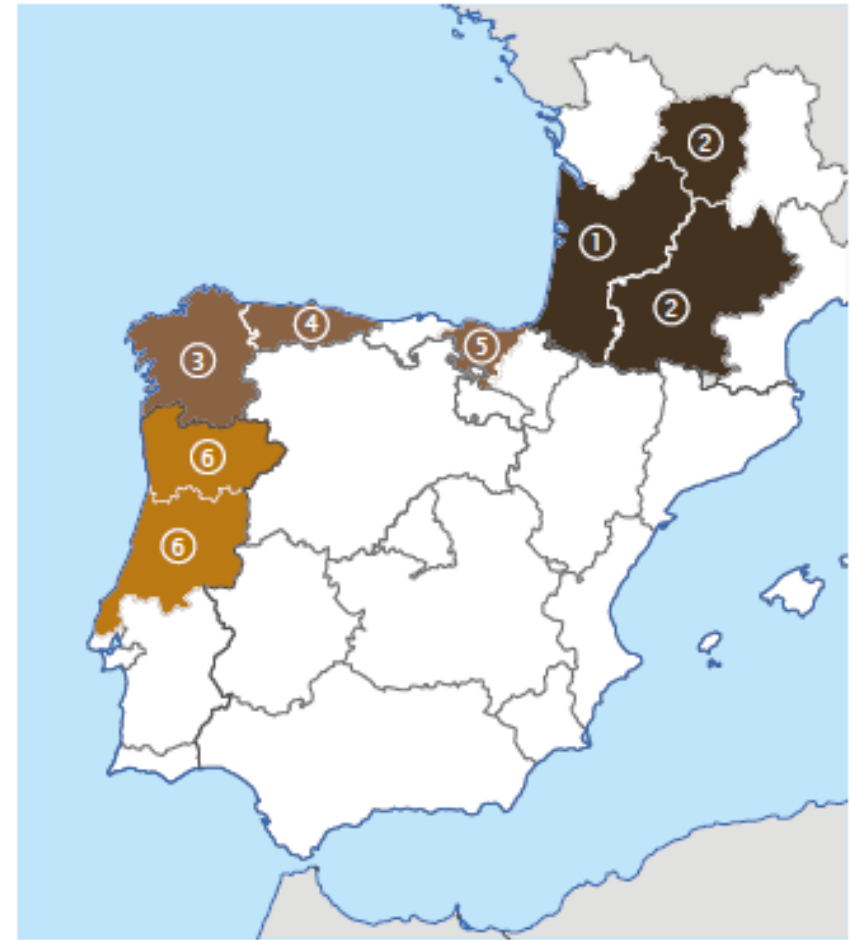
Forest Research





FORRISK: overview

- ❖ **Interreg SUDOE** (southwestern Europe)
- ❖ **Theme:** Forest management
- ❖ **Duration:** more of 2 years (27 months), closed 31/12/2014
- ❖ **10 partners** (coordinated by EFIATLANTIC)
- ❖ **Total budget: 1.138.646,00 EUR**



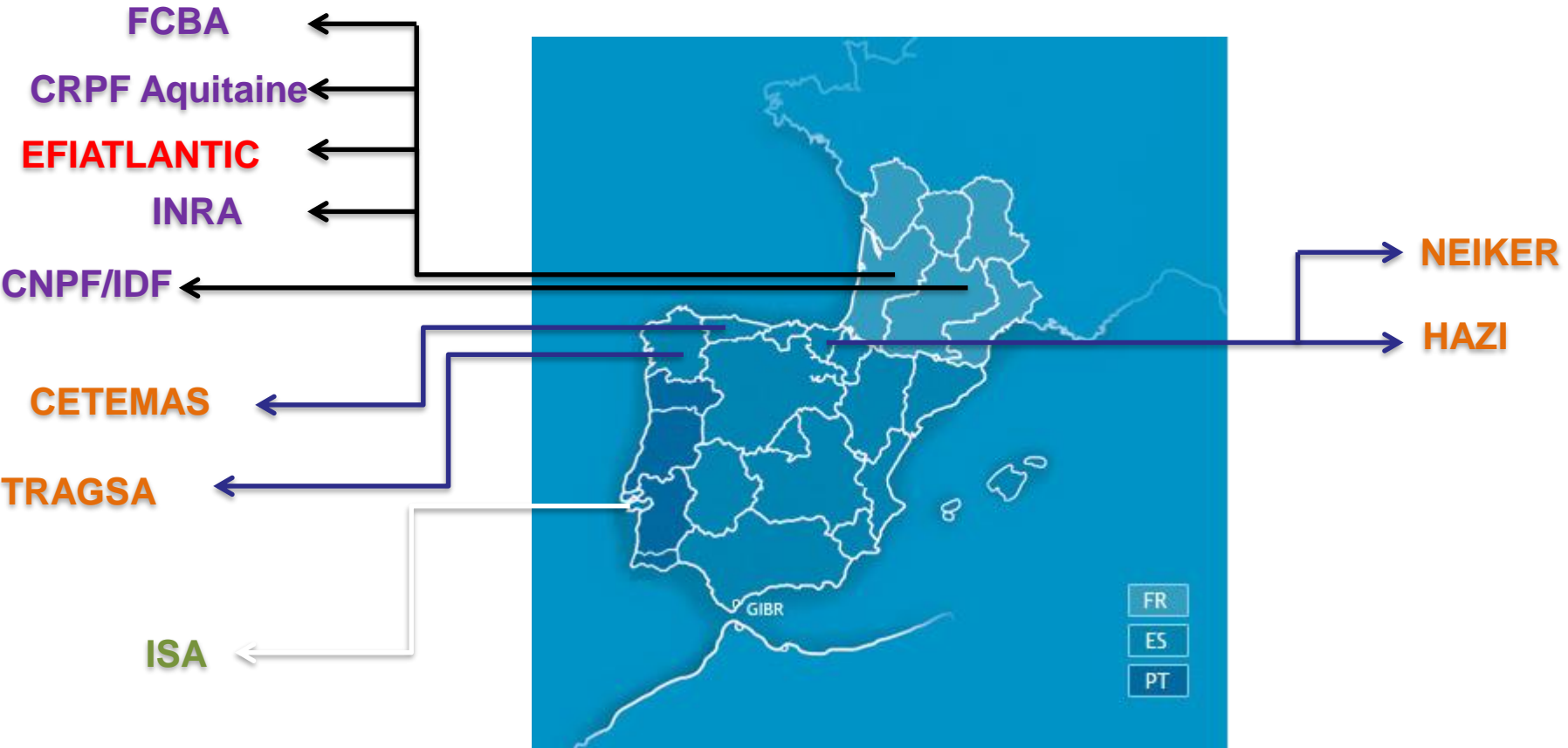
© EuroGeographics Association for the administrative boundaries.





FORRISK: overview

Partners: 5 from France (including **coordination**), 4 from Spain, 1 from Portugal





FORRISK project general diagram

WP 2 : Institutional tools of risk management

Analysis of existing institutional tools for each region
Comparison of systems
Suggestions for improvements

WP 3 :Risk management

Installation and assessment of devices and analysis to identify ways to fight against risks (ecological, genetic and silvicultural)

WP 4 : Risk analysis and decision support tools

Risk analysis (mapping, vulnerability assessment..)
Development and adaptation of modelling tools and decision support tools

WP 1: Project coordination and management

WP 5: Project monitoring and evaluation

WP 6 : Advertising, information and capitalization of the project

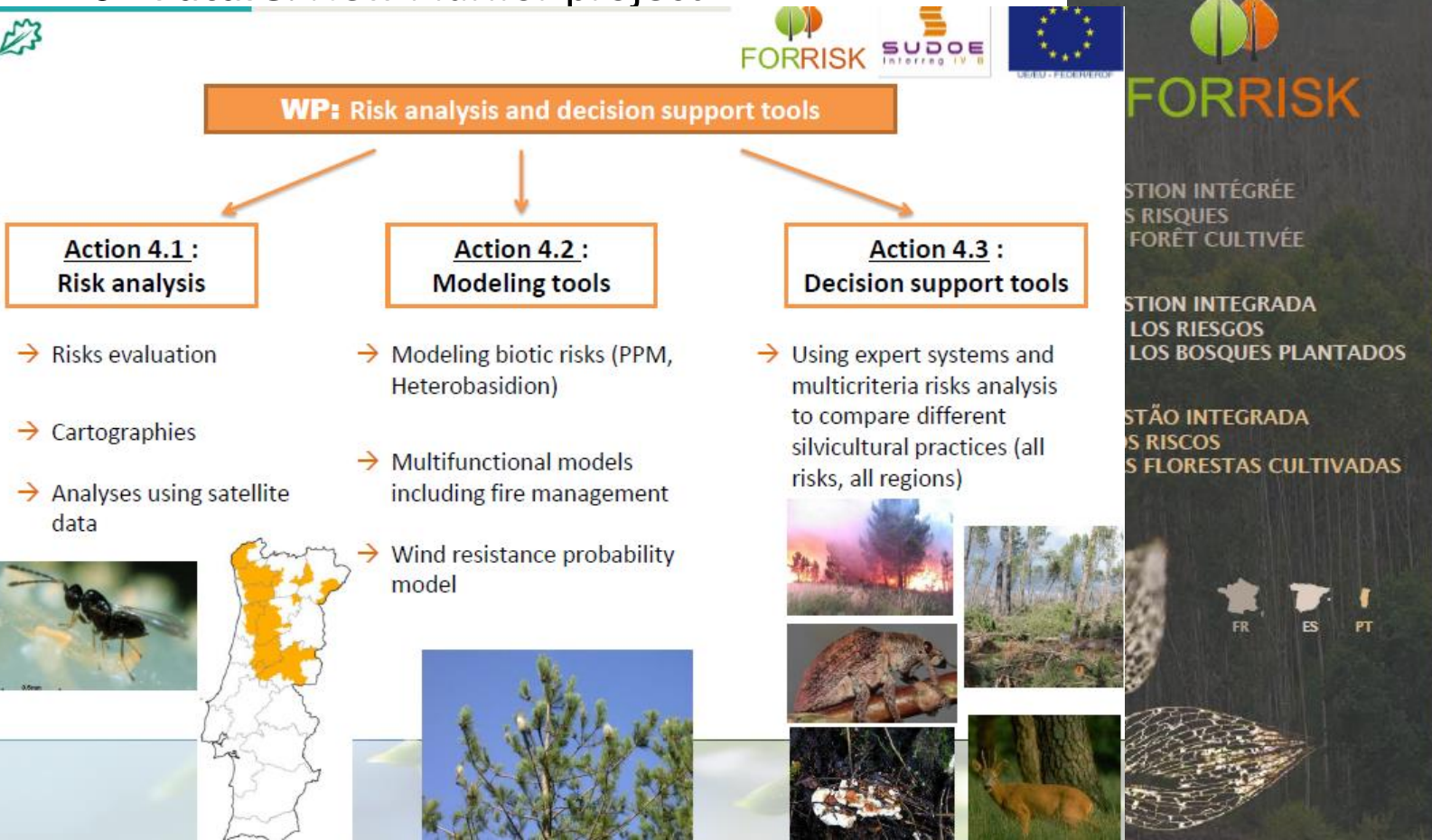
- Inter-regional workshops on risks
- Panel discussion on existing systems for risk prevention
- Publication of technical sheets, management manuals
- Publication of records, summary documents and scientific articles
- Website-Logotype





Results, Innovative points

- **Collaboration:** Inside regions and among partners
- **Technology:** Use of new forest tools and transfer of results
- **Future:** New Plurifor project



FORRISK

STION INTÉGRÉE
S RISQUES
FORÊT CULTIVÉE

STION INTEGRADA
LOS RIESGOS
LOS BOSQUES PLANTADOS

STÃO INTEGRADA
OS RISCOS
S FLORESTAS CULTIVADAS

FR ES PT





ForestGALES2: A Wind Risk Management Model (WRMM)



Single stand predictions using field measurements

Stand Characteristics
Stand ID: ForestGALES
Soil type: Brown Earth
Rooting depth: Medium (40 - 80 cm)
 Current Spacing (m)
 Current Stocking (N/ha): 350

Tree Characteristics
Species: User-defined species 2
Top height of stand (m): 33
Mean DBH (cm): 45

DAMS
 Grid Reference Calculation
NH180150 Apply... DAMS Score: 15

Wind Damage Risk
Return period: 25
Wind Damage Risk Status: Status 4
Critical wind speed: 77 km/h

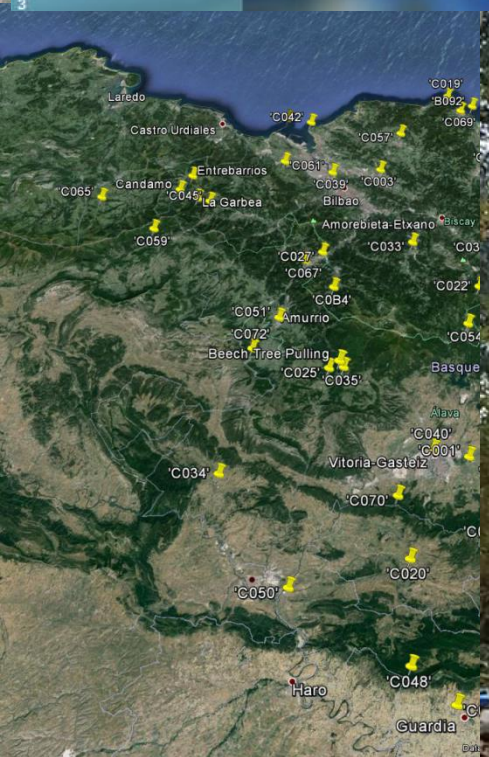
BREAKAGE: 200
Status 1
100 km/h WHC: 3

Upwind Edge Effect
 Windfirm edge
 Brown edge - Size of gap (m): 0

Controls
Run Print Form Report Help Open File Save File Defaults Close

Weibull-A calculated from DAMS.

ForestGALES





Necessary conditions to successfully transfer the initiative

- Cluster/Team work among technological partners
- Good team coordination
- Common forest species and risks
- Rentability, forest owners interested for improving their management
- ... And public funds





Thank you very much for your attention !!!

