

# HOW CAN THE COHESION POLICY BE USED TO FINANCE PROJECTS IN THE MOUNTAINS?

## MOBILITY

### WHAT IS IT?

The Cohesion Policy is the European Union's largest investment policy. It offers funding to reduce socio-economic and territorial disparities across the European Member States and regions. In article 174 of the European Treaty of the Functioning of the European Union, this policy recognises that particular attention has to be paid to mountain areas.

### WHAT ARE THE OBJECTIVES?

Over the 2021–2027 period, the Cohesion Policy will deliver on five objectives:



#### Smarter Europe

innovation, digitalisation, economic transformation and support to SMEs



#### Greener Europe

carbon-free, green energy, climate change adaptation



#### More connected Europe

strategic transport, digital networks, connectivity



#### More Social Europe

quality employment, education, skills, social inclusion and equal access to healthcare



#### Europe closer to citizens

locally-led strategy, sustainable urban and rural development

### HOW MUCH DOES IT AMOUNT TO?

In total, €392 billion – almost a third of the total EU budget – has been set aside for the Cohesion Policy over the 2021–2027 period. Funds are channelled through four main funds:

- 1 The European Regional Development Fund (ERDF)
- 2 The Cohesion Fund (CF)
- 3 The European Social Fund Plus (ESF+)
- 4 The Just Transition Fund (JTF)



The European Union has launched Next Generation EU, a programme to support recovery with an additional €776.5 billion through the Cohesion Policy over the 2021–2027 period.

### HOW DOES IT WORK?

Every 7 years, the European Union adopts a set of principles and priorities for the Cohesion Policy at European level. National and regional authorities in each Member State are then responsible for defining and implementing their own Operational Programme(s), alongside the European Union. These Programmes describe the specific priorities and actions that can be financed locally through the Cohesion Policy. In addition to these programmes, the Cohesion Policy is implemented through the Interreg programmes, which fund cooperation projects between regions from different countries.



This project has received funding from the European Union's Directorate General Regional and Urban Policy under Grant Agreement No 2020CE16BAT209.



# HOW WILL THE COHESION POLICY SUPPORT MOBILITY IN MOUNTAIN AREAS?

Mobility is a key concern in mountain areas. **Geographical constraints** and sometimes **low-density settlements** often make public transport unviable or too costly in mountain areas. Mountain people are often dependent on private cars for their daily journeys and are confronted with a lack of infrastructure.

Yet mobility is a key driver of **attractiveness in mountain areas**. It is therefore essential to work towards making public transport more accessible, safe and multimodal, and to facilitate commuting between rural and urban areas.

Through its Objective 3 "More Connected Europe", the Cohesion Policy encourages investment in **regional and national transport**, including the enhancement of **multimodality** around urban centres and the deployment of **sustainable mobility solutions**. In addition, funds directed at mountain areas may be available under Objective 5 "A Europe Closer to Citizens", which aims to support the sustainable development of rural areas and promote local and bottom-up initiatives.

**What is this factsheet for?** This factsheet aims to give you some **practical examples** of how the Cohesion Policy will be used to finance the fight against climate change across Europe's mountain regions between 2021 and 2027.

## GET INSPIRED!

### OPERATIONAL PROGRAMME - SILESIA REGION

**Relevant objectives:** To support sustainable, multimodal urban mobility as part of the transition towards a zero-carbon economy.

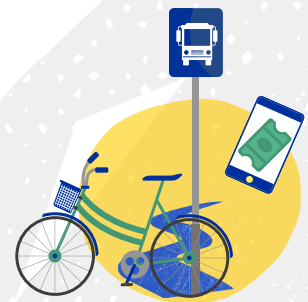


#### **How are mountain areas taken into consideration?**

The programme emphasises the need to strengthen the links between cities and peripheral and rural areas, including the ones in mountains.

#### **What type of actions can be financed?**

- Development of sub-regional bus transport infrastructure (stops, shelters, depots)
- Co-financing of accompanying projects, such as interchange nodes, bicycle routes
- Development of IT systems for transport network management, including online information and ticketing



More information: <https://rpo.slaskie.pl>  
Contact: Main Information Point of European Funds in the Region  
[punktinformacyjny@slaskie.pl](mailto:punktinformacyjny@slaskie.pl)

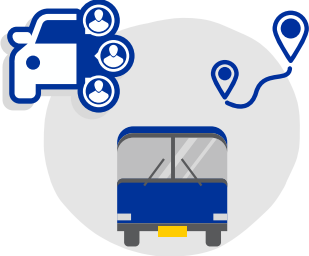


Silesia Region  
(Poland)

## INTERREG FRANCE-SWITZERLAND

**Relevant objective:** To develop and strengthen sustainable, intelligent, intermodal and climate-resilient mobility, including improving access to TEN-T and cross-border mobility.

**How are mountain areas taken into consideration?** Mountain areas are one of the two territorial priorities for this Operational Programme, which specifically mentions the objective of ensuring “better connection and service of mountain territories”.



### What type of projects can be financed?

- Digital solutions for e-mobility
- Implementation of cross-border freight transport strategies, including “last mile” solutions
- Schemes that promote multimodality, slow mobility and car sharing.

**Examples of beneficiaries:** Public authorities, SMEs, business support organisations, universities, NGOs.

More information: <https://www.interreg-francesuisse.eu>  
Contact: Bourgogne-Franche-Comté region  
[interreg@bourgognefranche.comte.fr](mailto:interreg@bourgognefranche.comte.fr)  
Interreg regional coordination  
[france-suisse@interreg.ch](mailto:france-suisse@interreg.ch)



Check out the list of eligible areas  
in France and Switzerland



## INTERREG POCTEFA



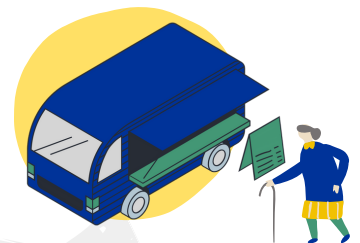
**Relevant objectives:** To encourage the development of reverse mobility offers like mobile services to ensure access to services for elderly, vulnerable and isolated people.

### How are mountain areas taken into consideration?

This programme underlines the need “to meet the needs of the population living in rural and mountainous areas and with a high degree of ageing, or groups with socio-economic difficulties, improving access to public services”.

### What type of projects can be financed?

- Projects designed to eliminate difficulties in accessing health and care services
- Development of mobile medical services
- Creation and development of new reverse mobility offers like mobile shops



More information: <https://www.poctefa.eu>  
Contact: Working Community of the Pyrenees  
[info@poctefa.eu](mailto:info@poctefa.eu)



Check out the list of eligible areas  
in France, Andorra, Spain



## OPERATIONAL PROGRAMME - NORTH-WEST REGION

**Relevant objective:** To increase regional connectivity and road safety and, as a result, to allow easier access to public services, jobs and opportunities for citizens residing in rural areas and small towns.

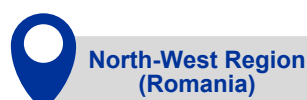
**How are mountain areas taken into consideration?** This programme focuses on the Bistriya-Nysjud, Maramurej and Apuseni Mountains.

**What type of projects can be financed?**

- Modernisation of 179 km of county roads and 382 km of secondary roads
- Construction of road connections
- Development of solutions for traffic decongestion/fluidisation.



More information: <https://adrvest.ro/por-2021-2027/>  
Contact: Regional Development Agency for the Western Region  
[office@adrvest.ro](mailto:office@adrvest.ro)



### WHO CAN BENEFIT FROM THESE FUNDS?

Public and private organisations can receive funding under the Cohesion Policy, as long as they bring added value to the implementation of projects. These organisations may participate as project partners but may also contribute as observers or external experts. Private individuals are not generally accepted as project partners in territorial programmes but can benefit from funds under the FSE+. The Operational Programmes above provide a non-extensive list of potential beneficiaries.

This document was prepared in early 2022 and it is based on the draft version of the Operational Programmes. Therefore, part of its content might be subject to change. The final text of the Operational Programmes financed through the 2021–2027 Cohesion Policy will be available at the following QR code:



## WHAT IS MONTANA174?

Montana174 is a communication campaign to inform you – mountain citizen - on the many opportunities offered by the Cohesion Policy in mountain areas. In mountains, the Cohesion Policy gives funds to reinforce digital and social innovation, accelerate climate mitigation and adaptation, support tourism, foster youth employment and enhance mobility.

[www.montana174.org](http://www.montana174.org)



This publication reflects only the author's view. The European Commission is not responsible for any use that may be made of the information it contains.

