

Integrated care

Birgitta Sacrédeus



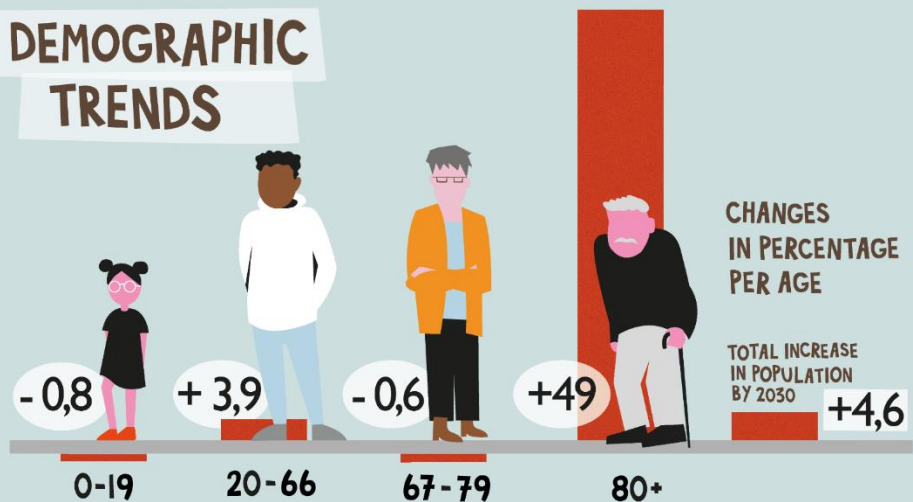
Integrated care

Person-centered health care
designed for peoples needs and
abilities

In Sweden

- National transformation
- Politically driven with great unity
- Wide range of work going on around the country

DEMOGRAPHIC TRENDS



CHANGES
IN PERCENTAGE
PER AGE

TOTAL INCREASE
IN POPULATION
BY 2030

WHY

INTEGRATED

CARE?



CHANGING
NEEDS



DIGITIZATION DRIVES
BEHAVIORAL CHANGES



EQUAL CONDITIONS FOR HEALTH

International movement



- Integrated care is in line with the WHO:s goal of achieving Universal Health Coverage (UHC) around the world.
- Shifting from today's health care system, which is largely built around diseases and institutions, to a health care designed for peoples needs and abilities

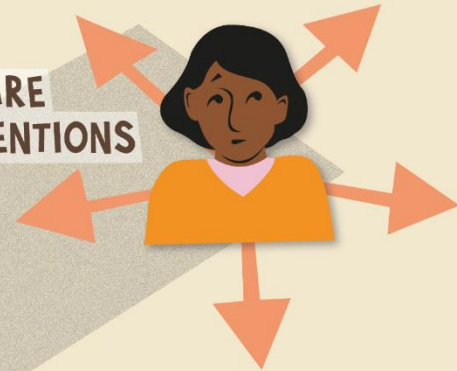
FROM FOCUS ON ORGANISATION

- TO FOCUS ON PERSON AND RELATIONSHIP



FROM ISOLATED CARE AND WELFARE INTERVENTIONS

- TO COORDINATION BASED ON THE FOCUS OF PERSON



INTEGRATED CARE

FROM REACTIVE

- TO PROACTIVE AND HEALTH ENHANCEMENT



FROM RESIDENTS AND PATIENTS AS PASSIVE RECIPIENTS

- TO ACTIVE CO-CREATORS



From passive receiver to active co-creator

- Create together with residents, patients and users



From reactive to proactive and health-promoting

- Health promotion, prevention and proactive measures are the most sustainable way of working
- Creating conditions for independence and quality of life
- Creating the conditions for equal health



From isolated care and nursing efforts to coordination based on the person's focus

- Start from the best for the patient / user throughout the care process.
- Promote shared responsibility and trust.
- Create conditions for equal care.



Thank you!
